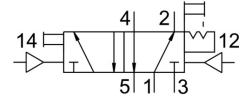
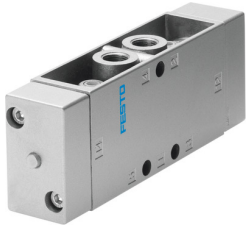


Pneumatic valve

JH-5-1/8-EX

Part number: 536035

FESTO



Data sheet

Feature	Value
Valve function	5/2, bistable
Actuation type	Pneumatic
Width	26 mm
Standard nominal flow rate	600 l/min
Pneumatic working port	G1/8
Operating pressure	0 MPa ... 1 MPa
Operating pressure	0 bar ... 10 bar
Structural design	Plate seat
Degree of protection	IP65
CE marking (see declaration of conformity)	as per EU explosion protection directive (ATEX)
ATEX category gas	II 2G
ATEX category for dust	II 2D
Type of ignition protection for gas	Ex h IIC T4 Gb
Type of (ignition) protection for dust	Ex h IIIC T130°C Db
Explosive ambient temperature	-10°C ≤ Ta ≤ +60°C
Nominal width	5 mm
Width dimension	27 mm
Type code	JH
Exhaust air function	With flow control option
Sealing principle	Soft
Mounting position	Any
Type of control	Direct
Pilot air supply port	External
Flow direction	Non-reversible
Symbol	00995757
Lap	Underlap
Pilot pressure MPa	0.12 MPa ... 1 MPa
Pilot pressure	1.2 bar ... 10 bar
Max. switching frequency	12 Hz
Changeover time	7 ms
Max. positive test pulse with 0 signal	2200 μs
Max. negative test pulse on 1 signal	3700 μs
Explosion prevention and protection	Zone 1 (ATEX) Zone 2 (ATEX) Zone 21 (ATEX) Zone 22 (ATEX)

Feature	Value
Operating medium	Compressed air as per ISO 8573-1:2010 [7:4:4]
Information on operating and pilot media	Operation with oil lubrication possible (required for further use)
Corrosion resistance class (CRC)	1 - Low corrosion stress
Storage temperature	-20 °C ... 60 °C
Temperature of medium	-10 °C ... 60 °C
Ambient temperature	-10 °C ... 60 °C
Product weight	330 g
Type of mounting	Optionally: On terminal strip With through-hole
Venting hole connection	M5
Pilot air port 12	G1/8
Pilot air port 14	G1/8
Pneumatic connection 1	G1/8
Pneumatic connection 2	G1/8
Pneumatic connection 3	G1/8
Pneumatic connection 4	G1/8
Pneumatic connection 5	G1/8
Note on materials	RoHS-compliant
Seals material	NBR TPE-U(PU)
Housing material	Die-cast aluminum